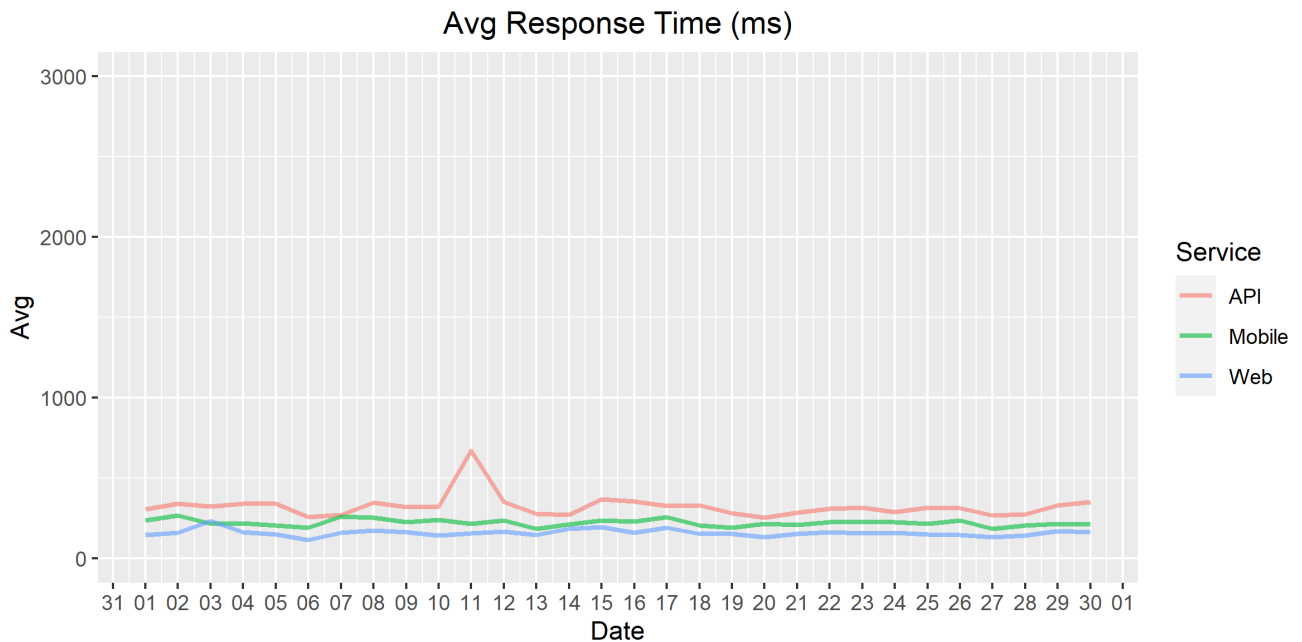
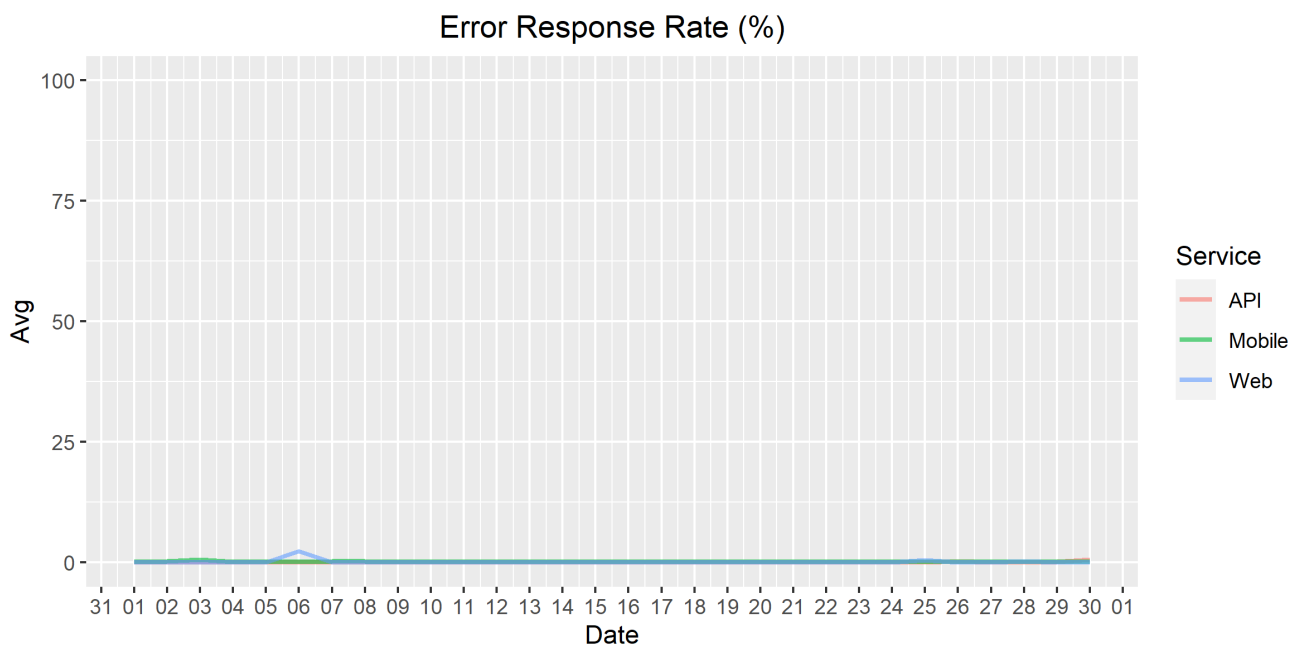


PSD2 API Performance statistics – June 2020

The chart below contains the average response time in milliseconds per day, for Handelsbanken's PSD2 APIs as well the Mobile App and Online Banking services.



The chart below contains the error response rate as a percentage per day, for Handelsbanken's PSD2 APIs as well the Mobile App and Online Banking services.



The chart below contains the availability rate as a percentage per day, for Handelsbanken's PSD2 APIs as well the Mobile App and Online Banking services.

